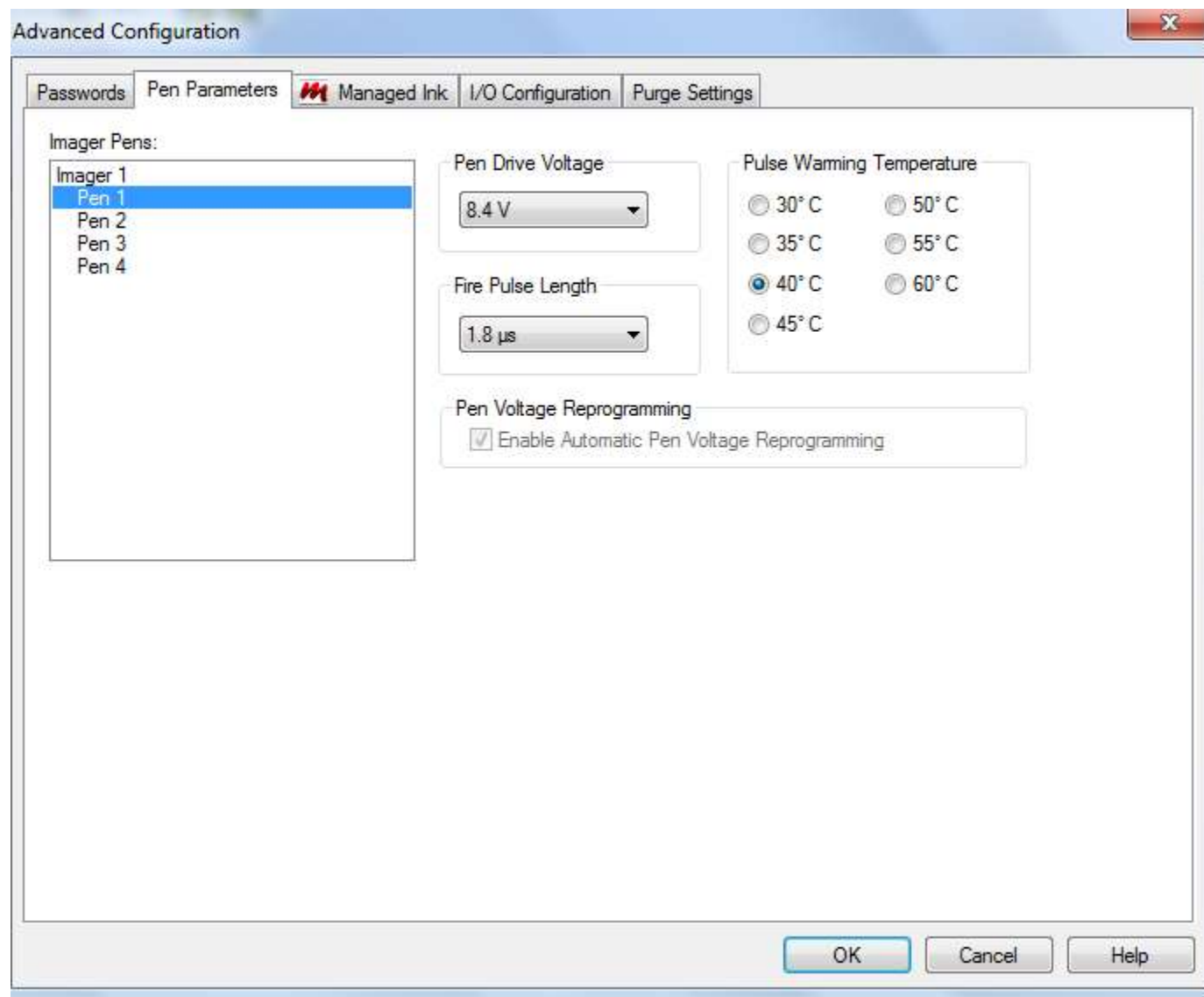


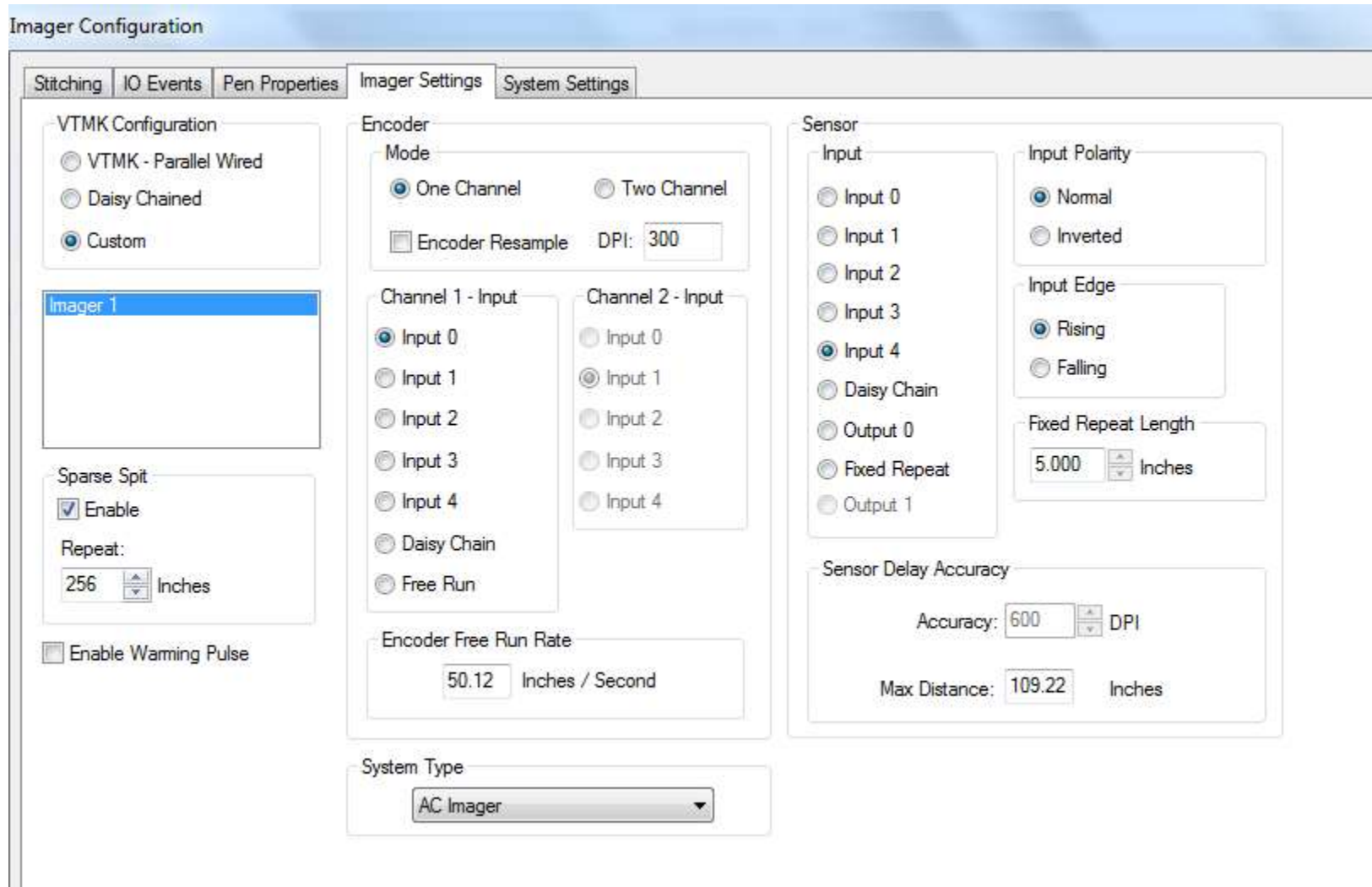
To adjust the Pen Parameter settings please choose the “Options” menu, then select “Advanced Configuration” Pen Parameters

When printing with PrimeX INK set both Pens 1 and 2 with these settings shown below. Please do this before you install the PrimeX cartridges!

Also, verify that you have the Enable warming pulse turned off in the Imager Settings Tab. See below



From the "Options menu" select "Imager configuration" then choose the "Imager Settings" tab. Verify that the box is not checked for "Enable Warming Pulse".(see below)



To adjust for the Carton Black please follow the same procedure outlined above to locate the Pen Parameters. Please adjust all 4 pens to the voltage and Fire Pulse Length as shown below.

